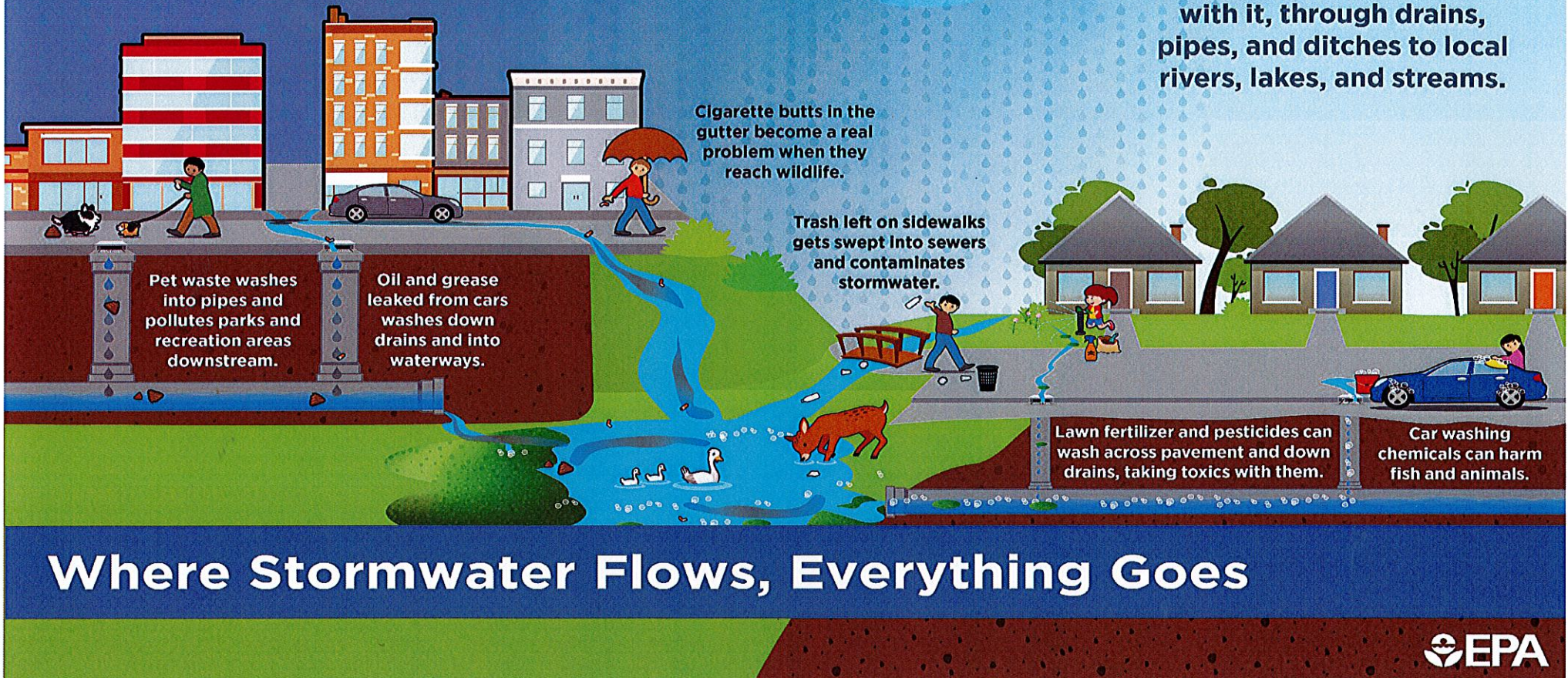


# Stormwater: Where It Flows, Everything Goes

When it rains, snows, or sleet, water hits hard surfaces and takes anything on that surface with it, through drains, pipes, and ditches to local rivers, lakes, and streams.



### Municipal Separate Storm Sewer System

A municipal separate storm sewer system (MS4) is a system of conveyances (including but not limited to streets, ditches, catch basins, curbs, gutters, and storm drains) that is designed or used for collecting or conveying stormwater and that discharges to surface waters. Separate storm sewers carry stormwater runoff directly to local waterbodies. As stormwater flows over streets and other impervious surfaces, it sweeps up pollutants such as oils, chemicals, pathogens, and sediments. In separate sewer areas, this pollution is carried by stormwater and discharged directly into local waterways. This can have a negative impact on water quality and recreational uses. (The federal government requires local municipalities to educate their residents on MS4. Please look over this page and see what you personally can do to cut down on harmful discharges. So far, we have not had to add an MS4 fee to residents. More information is available on the Borough website.)



# DID YOU KNOW?

**Business/Landlord License** – Ordinance #818 requires the licensing or relicensing of all businesses, including landlords, whether permanent or transient, operating in the Borough of West Easton for an annual fee of \$20.

**Daylight Savings Time** – Turn clocks ahead one hour on March 9, 2025, at 2:00am.

**Dogs** – Dogs are to be under control of their owners (on a leash or in a fenced in yard) at all times. Animal waste is to be picked up and disposed of by their owners.

**Egg Hunt** – The Ladies Auxiliary will sponsor their annual Easter Egg Hunt on Saturday, April 19, 2025, at noon.  
\*\*More information to follow on Borough Facebook page, and Borough website.

**Litter** – People who litter have a lazy “nobody tells me what to do” attitude and feel they should not have to spend even ten seconds cleaning up after themselves. Please keep your property, streets, and parks litter free.

**Lost mail** – If you would prefer to receive your sewer/refuse billing via email rather than USPS, due to lost billings or any other reason, please email [boroughmanager@westeastonborough.org](mailto:boroughmanager@westeastonborough.org) and provide your name, service address, and email address. Claiming to not have received your bill does not remove your obligation.

**Police Department Contacts** - **ALL** local police departments/officers are to be dispatched via the Northampton County 911 Center. To report an emergency call 911, for non-emergencies call 610-759-2200. If you have a basic question that can wait for an answer or specific questions regarding West Easton, you can call 610-438-2304 and leave a message, or email Chief Mahady at [rmahady@westeastonpd.com](mailto:rmahady@westeastonpd.com). Please do not call the borough office or officers directly with a problem; they need to be dispatched through the County Call Center.

**Property Tax** - The tax collector will be mailing out the 2025 West Easton Borough property taxes at the beginning of February.

**Sewer/Trash Quarterly Billing** - Sewer/trash utility bills go out quarterly and are due the following month; 1<sup>st</sup> quarter billing is mailed by January 15th and is due February 15th; 2<sup>nd</sup> quarter billing is mailed by April 15th and is due May 15th; 3<sup>rd</sup> quarter billing is mailed July 15th and is due August 15th; 4<sup>th</sup> quarter billing is mailed October 15th and is due November 15th. As of now, West Easton Borough bills on a flat rate for sewer charges. Holidays and weekend dates may change due dates slightly. Please check your bills carefully to make sure you are paying the correct amount.

**SNOW EMERGENCY ROUTES** - Main from East to Adamson to Easton boundary; East from Spring to 3rd; 3rd from East to Keystone; 7th from East to Center; Spring from Center to Iron; Spring from Ridge to East; Ridge from Spring to Wilson boundary; 10th from Ridge to Palmer; Palmer from 10th to Wilson boundary; Keystone from Spring to Front; Front from Keystone to Iron. (Maps are available online.) Tune into WFMZ, Channel 69, our Facebook page, and the Borough website for Snow Emergency declarations.

**TRASH REMINDERS** - Please keep in mind that our contract calls for 2 cans or 3 bags of garbage per residential unit. Cardboard should be in the recycle bin, not thrown on the sidewalk; one construction bag/load per week (nails removed), not to exceed 50 pounds; one bulk item the first pickup of the month; mattress and box springs should be totally wrapped in some kind of plastic; brush should not be more than 3 feet long and should be bundled or bagged. If animals get into your trash, it is your responsibility to clean up the mess. Do not use your recycle bin for trash.  
**Remove trash cans from curb, and have out of sight, by Tuesday morning.**

**West Easton Borough Elected Officials** – Mayor Dan DePaul; Council President Paul James; Council Vice-President Janie Jones Brown; Council Members: Robert Adams, David Bolash, Kenny Decker, Jr, Sharon Paige-Lisenbee. Tax Collector: Elizabeth Hanni.

\*\*Facebook: West Easton Borough, PA; Email: [boroughmanager@westeastonborough.org](mailto:boroughmanager@westeastonborough.org);  
Website: [www.westeastonborough.com](http://www.westeastonborough.com); Phone: 610-252-6651; Fax 610-252-6993~



# WEST EASTON BOROUGH COLLECTION CALENDAR

| January 2025 |    |    |    |          |    |    |
|--------------|----|----|----|----------|----|----|
| Su           | M  | Tu | W  | Th       | F  | Sa |
|              |    |    |    | <b>H</b> | 2  | 3  |
| 4            | 5  | 6  | 7  | 8        | 9  | 10 |
| 11           | 12 | 13 | 14 | 15       | 16 | 17 |
| 18           | 19 | 20 | 21 | 22       | 23 | 24 |
| 25           | 26 | 27 | 28 | 29       | 30 | 31 |

| February |    |    |    |    |    |    |
|----------|----|----|----|----|----|----|
| Su       | M  | Tu | W  | Th | F  | Sa |
|          |    |    |    |    |    | 1  |
| 2        | 3  | 4  | 5  | 6  | 7  | 8  |
| 9        | 10 | 11 | 12 | 13 | 14 | 15 |
| 16       | 17 | 18 | 19 | 20 | 21 | 22 |
| 23       | 24 | 25 | 26 | 27 | 28 |    |

| March |    |    |    |    |    |    |
|-------|----|----|----|----|----|----|
| Su    | M  | Tu | W  | Th | F  | Sa |
|       |    |    |    |    |    | 1  |
| 2     | 3  | 4  | 5  | 6  | 7  | 8  |
| 9     | 10 | 11 | 12 | 13 | 14 | 15 |
| 16    | 17 | 18 | 19 | 20 | 21 | 22 |
| 23    | 24 | 25 | 26 | 27 | 28 | 29 |
| 30    | 31 |    |    |    |    |    |

| April |    |    |    |    |    |    |
|-------|----|----|----|----|----|----|
| Su    | M  | Tu | W  | Th | F  | Sa |
|       |    | 1  | 2  | 3  | 4  | 5  |
| 6     | 7  | 8  | 9  | 10 | 11 | 12 |
| 13    | 14 | 15 | 16 | 17 | 18 | 19 |
| 20    | 21 | 22 | 23 | 24 | 25 | 26 |
| 27    | 28 | 29 | 30 |    |    |    |

| May |    |    |    |    |    |    |
|-----|----|----|----|----|----|----|
| Su  | M  | Tu | W  | Th | F  | Sa |
|     |    |    |    | 1  | 2  | 3  |
| 4   | 5  | 6  | 7  | 8  | 9  | 10 |
| 11  | 12 | 13 | 14 | 15 | 16 | 17 |
| 18  | 19 | 20 | 21 | 22 | 23 | 24 |
| 25  | 26 | 27 | 28 | 29 | 30 | 31 |

| June |    |    |    |    |    |    |
|------|----|----|----|----|----|----|
| Su   | M  | Tu | W  | Th | F  | Sa |
| 1    | 2  | 3  | 4  | 5  | 6  | 7  |
| 8    | 9  | 10 | 11 | 12 | 13 | 14 |
| 15   | 16 | 17 | 18 | 19 | 20 | 21 |
| 22   | 23 | 24 | 25 | 26 | 27 | 28 |
| 29   | 30 |    |    |    |    |    |

| July |    |    |    |    |          |    |
|------|----|----|----|----|----------|----|
| Su   | M  | Tu | W  | Th | F        | Sa |
|      |    | 1  | 2  | 3  | <b>H</b> | 5  |
| 6    | 7  | 8  | 9  | 10 | 11       | 12 |
| 13   | 14 | 15 | 16 | 17 | 18       | 19 |
| 20   | 21 | 22 | 23 | 24 | 25       | 26 |
| 27   | 28 | 29 | 30 | 31 |          |    |

| August |    |    |    |    |    |    |
|--------|----|----|----|----|----|----|
| Su     | M  | Tu | W  | Th | F  | Sa |
|        |    |    |    |    | 1  | 2  |
| 3      | 4  | 5  | 6  | 7  | 8  | 9  |
| 10     | 11 | 12 | 13 | 14 | 15 | 16 |
| 17     | 18 | 19 | 20 | 21 | 22 | 23 |
| 24     | 25 | 26 | 27 | 28 | 29 | 30 |
| 31     |    |    |    |    |    |    |

| September |          |    |    |    |    |    |
|-----------|----------|----|----|----|----|----|
| Su        | M        | Tu | W  | Th | F  | Sa |
|           | <b>H</b> | 2  | 3  | 4  | 5  | 6  |
| 7         | 8        | 9  | 10 | 11 | 12 | 13 |
| 14        | 15       | 16 | 17 | 18 | 19 | 20 |
| 21        | 22       | 23 | 24 | 25 | 26 | 27 |
| 28        | 29       | 30 |    |    |    |    |

| October |    |    |    |    |    |    |
|---------|----|----|----|----|----|----|
| Su      | M  | Tu | W  | Th | F  | Sa |
|         |    |    | 1  | 2  | 3  | 4  |
| 5       | 6  | 7  | 8  | 9  | 10 | 11 |
| 12      | 13 | 14 | 15 | 16 | 17 | 18 |
| 19      | 20 | 21 | 22 | 23 | 24 | 25 |
| 26      | 27 | 28 | 29 | 30 | 31 |    |

| November |    |    |    |          |    |    |
|----------|----|----|----|----------|----|----|
| Su       | M  | Tu | W  | Th       | F  | Sa |
|          |    |    |    |          |    | 1  |
| 2        | 3  | 4  | 5  | 6        | 7  | 8  |
| 9        | 10 | 11 | 12 | 13       | 14 | 15 |
| 16       | 17 | 18 | 19 | 20       | 21 | 22 |
| 23       | 24 | 25 | 26 | <b>H</b> | 28 | 29 |
| 30       |    |    |    |          |    |    |

| December |    |    |    |          |    |    |
|----------|----|----|----|----------|----|----|
| Su       | M  | Tu | W  | Th       | F  | Sa |
|          | 1  | 2  | 3  | 4        | 5  | 6  |
| 7        | 8  | 9  | 10 | 11       | 12 | 13 |
| 14       | 15 | 16 | 17 | 18       | 19 | 20 |
| 21       | 22 | 23 | 24 | <b>H</b> | 26 | 27 |
| 28       | 29 | 30 | 31 |          |    |    |

H Observed Holidays
   Trash only
   Trash and Recycling
   Bulk Item



**J. P. Mascaro & Sons**

*If it's service, it's us!*

**800-333-4624**

For more information on collection services  
please visit [www.jpascaro.com](http://www.jpascaro.com)



# WEST EASTON BOROUGH COLLECTION CALENDAR

## Trash Collection

Trash is collected one time (1) per week on **Monday**. Residents are reminded that there is a three (3) bag or two (2) 45 lb can limit per household. Trash is not to be placed out for collection earlier than 6:00 p.m. the evening before collection.

## Bulk Item Collection – One (1) time per month

Bulk items are collected one (1) time per month on the first Monday of every month. Bulk items include: mattress, box springs, chair, bookshelf, appliance, etc. **Mattresses and box springs must be wrapped in plastic** for pickup and count as one (1) item.

**NOTE:** Any bulk item containing refrigerants (a refrigerator, air conditioner, dehumidifier) must have the Freon removed by a Certified Technician and a sticker of certification must be placed on the unit. No items will be collected without a certified sticker.

**Construction Debris:** Residents are permitted to dispose of one (1) container or one (1) bundle of debris each week. Please place construction debris at the curb before 6 a.m. on Monday. Construction debris must be able to be easily picked up by two persons, so please consider the size and weight of the debris.

## Recycling Collection

Recycling is to be collected every other week on **Monday**. Follow the calendar to know when to place your recycling container curbside. West Easton Borough offers “single-stream” recycling program which makes it easier than ever to recycle. Thanks to new technology, everything that your household recycles will now go in the same container. No need to separate your papers, metals, cardboard, glass and plastics, etc. J. P. Mascaro & Sons will pick up recyclables every other week on Monday with a truck that resembles a trash truck. The collection truck has a compactor, so more recycling material will fit for more efficiency.

## What Can be placed out as Recyclables?

Paper and Cardboard  
(no books, no contaminated pizza boxes)  
Wax Cartons: Milk, juice, soup, flavored drinks and cartons can be recycled.  
Aluminum (no aluminum foil)  
Glass (no window glass, mirrors or light bulbs)  
Plastics #1- #7 (no toys, styrofoam or ceramics)

## Household Hazardous Wastes

### NOT ACCEPTED

Toxic chemicals, pesticides, oil-based paints, automotive batteries, fuels or fluids must be disposed of properly. Please refer to the Northampton County website at [www.northamptoncounty.org](http://www.northamptoncounty.org) for more information.



## Electronics CANNOT be disposed as Waste

Due to PA state law, TVs, computers, laptops, monitors and electronics will NOT be collected. Please refer to the Northampton County website at [www.northamptoncounty.org](http://www.northamptoncounty.org) for more information on how to recycle electronic waste.

## Holiday Schedule

On holiday weeks, if pickup falls on or after the day of the holiday there will be a one (1) day delay. Collection will occur on Tuesday.

**Holidays:** New Year's Day, Memorial Day, Independence Day, Labor Day, Thanksgiving Day and Christmas Day.



**J. P. Mascaro & Sons**

*If it's service, it's us!*

**800-333-4624**

For more information on collection services please visit [www.jpmascaro.com](http://www.jpmascaro.com)